

Purfleet on Thames *News*



Your Purfleet

Welcome to the first issue of this newsletter for the whole community of Purfleet! The newsletter has been created by lots of different individuals and groups in Purfleet who have been working together over the last few months to make it happen.

This is the first time that so many people have worked together to produce one newsletter for the whole of Purfleet and we all hope that you find it interesting and useful.

Inside, you will find lots of information about what's going on in Purfleet and some interesting articles about Purfleet and the area.

Please take some time to have a look through – you may find out about something you didn't know was happening in Purfleet that you would love to try!

Get involved!

We hope that the newsletter will be able to go out on a regular basis but we

need people to become involved. If you would like to write an article, send in a quiz or poem or take some photographs then please get in touch! Or if you are a business who would like to sponsor the newsletter then we would love to hear from you!

Enjoy your reading!

Put your feet up in the (hopefully) warmer weather we are having now & enjoy reading all about what's going on in Purfleet!



Children's Information Service

We provide free information on the issues and services that affect the lives of children and families in Thurrock.

Our range of FREE information includes:

- Registered, good quality childcare
- Early education and funding
- Holiday and after school clubs
- Family Tax Credit
- Childcare vacancies and training
- Leisure services and other organisations.

Tel: 01375 652801

Email: cis@thurrock.gov.uk

www.childcarelink.gov.uk

THURROCK COUNCIL

What happens in the Riverlane Centre?



The Riverlane Centre has been home to a Children's Centre and After School Club since June 2006.

The purpose of a Children's Centre is to provide a range of services to meet the needs of children age birth to five and their families. Children's Centres work together with other professionals and offer activities that can benefit families and communities.

At the Riverlane Centre there are a range of facilities available:

- **Pick up your FREE Bookstart books for your children aged between 2 and 3 years old**
- **Photocopying**
- **Free Information Kiosk – access useful websites like Job Centre Plus, Childcare Link, Thurrock Council, Parentline Plus, CAB and Ask Thurrock**
- **Baby portraits – printed and placed in a nice photo frame**
- **Creche facility to enable you to take part in activities at the Centre (must be booked in advance)**
- **Library area for children and adults**

The Riverlane Centre also has an after school club for children aged between four and eleven years old. This picks up children from Purfleet Primary School and is open from 3 p.m. to 6.30 p.m.

We always ask for ideas about what parents and children would like to see happening in the Centre. Our current activities are in the 'What's On' section of this newsletter. We hope to offer new activities such as baby massage for dads in the future so watch out for our leaflets and posters!

For more information about the Children's Centre or After School Club please phone 01708 863739.

FREE Thurrock Tours

The Thurrock Thames Gateway Development Corporation is working to make Thurrock an even better place to live, work and play.

In late May the Development Corporation starts a programme of local Thurrock Tours, visiting some of its development sites and areas of local interest such as the RSPB Centre at Rainham Marshes and High House in Purfleet, through to Grays and Tilbury.

The tours will be free and last about two hours. The guides are local residents from Thurrock and have some wonderful stories about what it was like to grow up in the area.

If you or a group you are involved with are interested in taking a tour, please call 01708 895 440 or email jacqueline.capps@thurrocktdc.org.uk.

Point of View

*Take a look around you and tell me what you see
A run down looking council estate that's lacking TLC
There's dog poo on the pavements and rubbish all around
Graffiti on the walls and broken glass on the ground*

*A reputation for being a bad place, somewhere you don't want to go
Well that's what other people think but this is what I know
I wake up to the sound of birds chirping in the trees
Looking out my bedroom window, there's a wealth of green to see*

*A change of direction and it's the river that fills my view
My daughter gets excited to see the boats and yachts pass through
Proof House out the front, the Heritage Museum out back
A listed building up the road, how many can boast that?*

*We have our own post office and that's a rarity in itself
The owners John and Anne-Marie stock most things on their shelves!
Always a smile, a friendly word, you're greeted by your name
I can't think of anywhere else where I could say the same*

*So when I take a look around me as I'm walking down the street
I think I could do much worse than to live in Purfleet.
By Emma Clough*

Thurrock Play Network

Thurrock Play Network is a local registered charity that provides independent advice, support and resources for play and recreation in the community.

We work across the borough providing a range of opportunities, this includes:

- Family fun days
- Open access holiday activities
- Term time play schemes
- Five toy libraries
- Children's 'out of school' activity clubs (craft, table tennis and cooking)

The Pyramid Resource Centre based in Chadwell St Mary, provides toy, sports equipment and fundraising side shows for hire. A wide range of low cost craft materials and a reuse scrap project are also available.

What does Thurrock Play Network do in Purfleet?

In Purfleet this spring and summer we will be providing;

Outdoor Activities

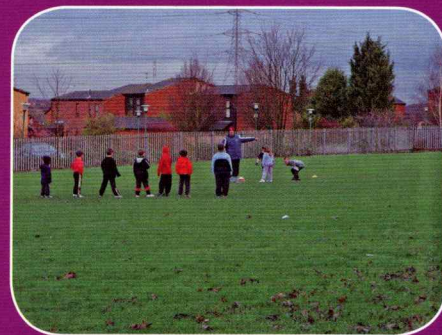
Term time:	Wednesdays	12 p.m. - 1.30 p.m.	Riverlane Childrens Centre
	Thursdays	6 p.m. - 8 p.m.	Spider Field
School holidays:	Thursdays	11 a.m. - 1 p.m.	Uplands Recreation Ground
	Thursdays	2 p.m. - 6 p.m.	Spider Field

'Barrel of Fun' Toy Library - Proof House, Centurion Way

Wednesdays	10 a.m. - 12 p.m.
Fridays	1 p.m. - 3 p.m.

Coming Soon in Purfleet Saturday Club for Dads and their children

For further information concerning Thurrock Play Network activities please ring 01375 389876



Thurrock Healthy Living Centre

The Thurrock Healthy Living Centre is a Big Lottery Funded project that is in its fifth year of working in Thurrock. We have been based in the Health Centre in Purfleet for two years and have been working with other groups to provide activities for the community.

With the Children's Centre we have set up activities such as keep fit, a cooking and craft group, community cafe and various training opportunities such as first aid and food hygiene certificates.

Within Purfleet school we have run football coaching with West Ham trainers and currently are working with Sean to provide basketball and street dance sessions.

In the Proof House, Centurion Way, Kids in the Kitchen is a children's cooking group and there is the opportunity to join in craft activities for children and a toy library.

On the Spider field we have a play facility and offer holiday play activities.

Walking for Health walks are run from the RSPB centre each week.

We are working with other groups in Purfleet to provide healthy, fun activities and volunteer and training opportunities for community members.

Look at the what's on section for more details or contact us on 01708 805086 or 07982777103 for a chat and to give us any ideas for other activities you would like to see running in your area.

walking the way to health

Then join us on these new **FREE** short walks, they last about 30 minutes so you can fit them in around your lifestyle.

Walking can improve your health in all sorts of ways!

Walking just one mile can burn at least 100 kcal

Hardly ever leave your front door?

Know walking is good for you but don't get round to it?

Have health problems & difficulty moving around?

Want to walk but get bored doing it on your own?

We meet Thursday's at 12.15pm @

RSPB CENTRE, NEW TANK HILL ROAD, PURFLEET (Meet at the centre)

For more information about this walk, other walks or to request an information pack please call Emma on 01375 413464 emma.barrett@swessexpct.nhs.uk

You don't need to book, just come along on the day. The walks take place come rain or shine so whatever the weather please dress accordingly. If its your first walk, please arrive 20 minutes early to register and chat with your walk leader.



LOTTERY FUNDED

THURROCK COUNCIL

Garrison Update

Those of you living on the Garrison must be aware of the face lift that has happened recently! The outside and inside has been painted to get rid of the dirty grey colour and make the area much brighter and cleaner. Tenants were given a choice of colours and had the chance to give their views about what colour they wanted. Quite a few tenants gave their opinion and 'Sand' was the colour chosen by most of the people.

Most of the estate has now been painted and everyone agrees that against the River it has given the Garrison the feel of being a lovely sunny place.

Come along and have your say...

Join the monthly Garrison estate inspections, meet 1.30 p.m. at the Local Office

Marine & River Court - every 3rd Thursday of the month

Chieftan Drive & Comet Close - every 4th Thursday of the month

Walk around with your estate officer and caretakers to see how clean and tidy it is. Take note of any other environmental issues, such as abandoned cars, repairs needed or improvements that could be made in the future.

Phone 01708 864898 for more info



THURROCK COUNCIL
www.thurrock.gov.uk



Before



After

A Tenant Rep for River Court

Emma Clough

I have lived and worked in Purfleet for several years and have always found it to be a good place to live. I have even moved away for a job but resigned and came back again! So it's not perfect but what area is? It is often the case that only the bad is talked about and the good gets overlooked. I am now going to be a Tenant Representative for River Court and hope that with the help of tenants, I will be able to get the finer side of Purfleet noticed!

What is a 'Tenant Rep'?

It means that I am formally recognised by the Council as the representative for our area. I can speak to the Council on behalf of tenants about any issues that affect you. I will act as a 'voice' for our community with the sole aim of improving our neighbourhood.

How can you contact me?

I will be making contact with local residents door to door to find out what concerns you. Alternatively, you can contact me through the Local Purfleet Council Office. Just leave a message and I will get back to you.

For more information on Tenant Reps or to be a Tenant Rep for your area please contact Clare Rydings, Tenant Participation on 01375 652453.

Drop in sessions

Claire Downes, Community Development Officer for Thurrock Development Corporation has a drop in session every week at the Purfleet Care Centre, this is on Wednesday between 2 p.m. and 4 p.m. Please feel free to pop by to get information about what's going on in Purfleet, pass on contributions for the newsletter or to talk about what you would like for the Purfleet area.

The last drop in session will be Wednesday 23rd May 2007.



RSPB at Rainham Marshes

Did you know that you have a unique nature reserve on your doorstep in Purfleet? You can get close to birds, other wildlife and the great outdoors.

Why not:

- Explore the site's fascinating military history
- See how many birds you can spot (250 species have been recorded so far!)
- Browse for gifts and wildlife products in the RSPB shop
- Take a stroll along the Riverside Walk with brilliant views of the Thames
- Have a picnic or enjoy a hot snack and drink in the café
- See the Neolithic forest at low tide on the shore of the Thames

Two hundred years ago the land along the Thames was wild and open marshland where cows grazed and wildlife flourished. Since then almost all of it has been drained, built on and changed beyond all recognition.

The land at RSPB Rainham Marshes is a rather special place as it is one of the few ancient landscapes left. It was left undeveloped mainly due to the fact it was used as a military training ground.

Now this unique nature reserve has become a brilliant place for families to enjoy days out together.

As well as a huge range of events, the RSPB offers a comprehensive education programme and community programme. To find out more ask at the Environment and Education Centre, look online at www.rspb.org.uk/rainham or send us an e-mail.

Location & contact details:

RSPB Environment and Education Centre,
New Tank Hill Road, Purfleet, Essex. RM19 1SZ
Tel: 01708 899840

E-mail: rainham.marshes@rspb.org.uk or
community@rspb.org.uk

Thurrock Development Corporation funded £1.5 million towards the visitors centre and environmental work.



Purfleet on Thames Village Forum



Purfleet on Thames Village Forum is the Community Forum for Purfleet. It was established to act as a voice for the local community.

The Forum receives a grant from Thurrock Council to fund projects and ideas put forward by the residents of Purfleet. We have bought computers for the local youth group, recording equipment for the Heritage Centre and created a ball park on Spider Field. Is there anything you would like us to do for you? If you or your organisation have any ideas then please get in touch or come along to one of our meetings.

The Forum meets on the last Tuesday of every month at 7 p.m. for 7.30 p.m. in

St Stephen's Church. Tea and coffee are provided and the meetings are open to anyone who is interested.

We regularly have speakers from Thurrock Council, Thurrock Development Corporation and representatives from developers and builders at our meetings. Recently we had a presentation about the plans for a new 'centre' in Purfleet from Thurrock Development Corporation. What do you think about these plans? Come to our meetings and air your views – what do you want to say to the people making plans for your village?

Community Forums are independent community groups interested in making a real difference to their community, at

the moment there are about 20 Forums throughout Thurrock. Membership of a Forum should include individual residents, local community groups, faith groups, businesses and services such as doctors, school, police etc.

By coming together through a Forum you can influence decision making and the delivery of services. We are always encouraging new people to become involved, so please come along and join us.

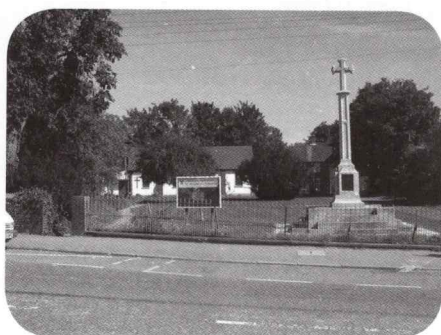
We look forward to seeing you soon!

For more information about the Forum please phone John on 01708 866600.

Where is St Stephen's Church?

I am still amazed at the number of people that still ask this question, some long standing Purfleet residents too, but you could say that nowhere is a true answer.

So what's the building behind the war memorial opposite the Royal Hotel?



Well yes that is St Stephen's Church but actually the Church was never built because what you see is the church hall, built by the Whitbread family behind their large family home, with the idea to then demolish the house and build the Church.

The parsonage was built, the hall completed and the house was demolished but the church which was to replace the family chapel was never built.

Here's a picture of the Whitbread house



around 1920, the Parsonage is on one side and the entrance to St Stephen's can just be made out at the other.

I'm glad that the Church was never built

because what we have today is a valuable multi purpose space. Yes it's used as a Church with altar and organ at one end of the building which can be screened off when not being used for worship, but most days of the week you will find a variety of activities taking place. See the list of local events and activities.

See picture (right) of St Stephen's set up ready for the Harvest and scarecrow festival.

Rev Andy Hudson with Chaplain Ray Holland, may be scruffy but they are not usually as badly dressed as this.

Services are Sunday's 11:00 an informal Communion celebration and 4:30 pm on the first Sunday of the month where you can experience different forms of worship including service of Healing. Watch notice board for further information.

Other activities taking place at St Stephens includes Keep Fit, Photography course, Stay and Play Groups, Youth Drop In, Village forum, the building can also be hired for private use

For more information on anything to do with St Stephens Church contact Rev Andy Hudson on 01708 689757 email hudsona6@aol.com

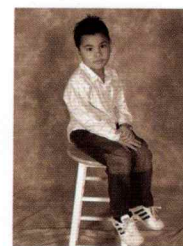
St Stephens is Part of the Anglican Parish of Aveley and Purfleet in the Diocese of Chelmsford.

Thurrock Development Corporation has provided £20,000 through its community fund to help revamp St Stephen's Church.



Affordable Photography

**In partnership with
St Stephen's Church Purfleet
And Purfleet Children's Centre**



Professional Portrait Studio



Only £5 per session

**Includes one 6"x4" print
In cardboard folder**

Reprints available to order

**To book your half hour session
Contact Andy on
01708689757 or 07989988496**

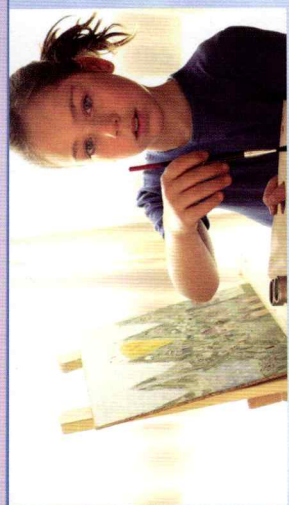
'What's on When?'

Dates & times	Activity	Location	Open to	Cost
Monday to Friday 9 a.m. to 3 p.m. (term time)	Library – children's & adults books	Riverlane Centre	All ages	Free
Monday to Friday 9 a.m. to 3 p.m. (term time)	Use of internet computers	Riverlane Centre	All ages	Free
Monday to Friday 3 p.m. to 6.30 p.m.	After School Club	Riverlane Centre (picks up Children from Purfleet Primary School)	Children age 4 to 11 years old	£7 per day £6.30 if on benefits
Monday 9.30 to 11.30 a.m. (term time)	Baby & Toddler Group	Riverlane Centre	Parents, carers & childminders with babies & toddlers	£1 per session
Monday 12.30 p.m. to 4 p.m.	Monday Club	Mulberry Drive Complex Hall	Older people	Nominal charge
Monday 1.15 p.m. to 2.30 p.m. (term time)	Keep Fit	St Stephen's Church	All ages (free crèche available – please ring Joyce on 01375 370831 to book your space)	£3 per session
Monday 1.30 p.m. to 3.00 p.m.	Tiny Treasures	Purfleet Care Centre	New parents (phone 01708 864843 to book)	Free
Monday 3.30 p.m. to 4.30 p.m.	Children's dance sessions	Purfleet Primary School	Years 4, 5 & 6	£1 per session
Monday 6.30 p.m. to 7.30 p.m. (term time)	Rainbows & Brownies	St Stephen's Church	Girls Aged 5 to 7 & 7 to 11 years	Subscription
Monday 7 p.m. to 10 p.m.	Youth Drop In	Youth Flat, Garrison	Aged 13 to 19 years	Free
Tuesday 10 a.m. to 12 p.m. (term time)	Baby & Toddler Stay & Play Time	St Stephen's Church	Parents, carers with babies & toddlers	£1.50 per session
Tuesday 1.30 p.m. to 2.45 p.m. (term time)	Activity Group/Craft & Cooking	Riverlane Centre	All ages (free crèche available – please ring Joyce on 01375 370831 to book your space)	£2 per session
Tuesday 1.30 p.m. to 3.30 p.m.	Child Health Clinic	Purfleet Care Centre	Families	Free
Tuesday 1.30 p.m. to 2.45 p.m. (term time)	Photography Group	St Stephen's Church	All ages (free crèche available – please ring Joyce on 01375 370831 to book your space)	Free
Tuesday 2 p.m. to 4 p.m.	OASIS Drop In	Purfleet Care Centre	All ages	Free
Tuesday 5 p.m. to 6.30 p.m. (Sept – April Term Time)	Childrens Cook & Eat Club	Proof House	Aged 8 to 13 years	£3.00 per session
Tuesday 7 p.m. to 10 p.m.	Youth Drop In	Youth Flat, Garrison	Aged 13 to 19 years	Free
Every last Tuesday in the month 7.30 p.m. to 9 p.m.	Purfleet Village Forum – Open Meeting	St Stephen's Church	All ages	Free
Wednesday 9 a.m. to 2 p.m. (term time)	Community Café	Riverlane Centre	All ages	£2 per family £1 per individual
Wednesday 10 a.m. to 12 p.m.	Coffee Morning	Mulberry Drive Complex Hall	Older people	Nominal charge for refreshments
Wednesday 10 a.m. to 12 p.m.	Toy Library – 'Barrel of Fun'	Proof House	All ages	Free
Wednesday 11.45 to 12.30 Once a month	Mobile library	Mulberry Drive Complex	All ages	Free
Wednesday 12 p.m. to 1.30 p.m. (term time)	Activities for toddlers	Riverlane Centre	Parents, carers with babies & toddlers	Free
Wednesday 12 p.m. to 2 p.m. (term time)	Toddler Games & Craft Sessions	Riverlane Centre	Parents, carers with babies & toddlers	Free
Wednesday 12 p.m. to 2 p.m. (term time)	Community Mums – Breastfeeding Support	Riverlane Centre	All ages (appointment only)	Free

MON

TUES

WED



Wednesday 4pm - 5.30pm (September - April Term Time)	Craft Club	Proof House	Aged 5 to 11 years	£3.00 per session
Every 3rd Wednesday of the month 7 p.m. to 8 p.m.	Midweek Service – New Covenant Church	Purfleet Primary School	All ages	Free
Wednesday 7.30 p.m. to 9.30 p.m.	Youth Drop In Centre	St Stephen's Church	11 years and over	Nominal charge
Thursday 8 a.m. to 1 p.m.	Hairdressing	Mulberry Drive Complex Hall	Older people	Charge depending on requests
Thursday 10 a.m. to 12 p.m. (term time)	Swimming Sessions (includes transport)	Meet at Riverlane for transport to Belhus	Adults & children (book on 01708 863739)	£4 for 1 adult and 1 child
Thursday 10 a.m. to 12 p.m. (term time)	1st Connections	Riverlane Centre	New mums	Free
Thursday 10 a.m. to 1 p.m.	DIAL – Disability Information & Advice	Mulberry Drive Complex Hall	All ages	Free
Thursday 10 a.m. to 4.30 p.m.	Centre is open	Purfleet Heritage Centre	Anyone	£3 adult, £1.50 child, under 5's free
Thursday 11 a.m. to 1 p.m. (school holidays)	Sports & Games (HLC & TPN)	Uplands Recreation Ground	All ages	Free
Thursday 11.55 a.m. new walkers register 12.15 walk starts	Walking the Way to Health	Meet at RSPB visitor centre	All ages	Free
Thursday 1 p.m. to 2.30 p.m. (term time)	Let's Get Physical Parent & Toddler Group	St Stephen's Church	Parents, carers with babies & toddlers	£1.50 per session
Thursday 2 p.m. to 6 p.m. (school holidays)	Crafts, Sports & Games (TPN & HLC)	Spider Field	All ages	Free
Every 3rd Thursday of the month 1.30 p.m.	Estate Inspection of Marine & River Court	Meet at Purfleet Housing Office	Tenants & residents of all ages	Free
Every 4th Thursday of the month 1.30 p.m.	Estate Inspection of Chieftan Drive & Comet Close	Meet at Purfleet Housing Office	Tenants & residents of all ages	Free
Thursday 6 p.m. to 8 p.m. (term time)	Crafts, Sports & Games (TPN & HLC)	Spider Field	All ages	Free
Thursday 6.30 p.m. to 9 p.m.	Bingo	Mulberry Drive Complex Hall	Older people	Nominal charge
Friday 10 a.m. to 12.00 p.m. (term time)	Mums and Bumps	Riverlane Centre	Mums to be	Free
Friday 10 a.m. to 1 p.m.	Citizens Advice Bureau Outreach Session	Purfleet Care Centre	All ages	Free
Friday 11 a.m. to 12.30 p.m.	Baby Massage Courses	Purfleet Care Centre	Parents with babies age 3 to 6 months (phone 01708 864834 to book)	Small cost to cover materials
Friday 1 p.m. to 3 p.m.	Toy Library – 'Barrel of Fun'	Proof House	All ages	Free
Last Friday of the month 7 p.m. to 8.30 p.m.	Prayer Meeting – New Covenant Church	Purfleet Primary School	All ages	Free
Every 2nd Friday of the month 10.30 p.m. to 1.30 a.m.	Night Vigil – New Covenant Church	Purfleet Primary School	All ages	Free
Every 4th Saturday of the month 10 a.m. to 12 p.m.	Surgery – Cllr Georgette Polley & Cllr Gareth Davies	St Stephen's Church	All ages	Free
Every other 3rd Saturday of the month 10 a.m. to 11 a.m.	Surgery – Cllr Andy Smith	Mulberry Drive Complex Hall	All ages	Free
Sunday 10 a.m. to 4.30 p.m.	Centre is open	Purfleet Heritage Centre	All ages	£3 adult, £1.50 child, under 5's free
Sunday 10.30 a.m. to 12.30 p.m.	Worship Service – New Covenant Church	Purfleet Primary School	All ages	Free
Sunday 11 a.m.	Services - Informal Communion Celebration	St Stephen's Church	All ages	Free
Every 1st Sunday of the month 4.30 p.m.	Services – different forms of worship	St Stephen's Church	All ages	Free

THURS

FRI

SAT

SUN

Celebrating Purfleet's Heritage

Over 100 people from Purfleet and beyond came along to find out more about the heritage of Purfleet on 11th February 2007. The event was organised by the High House Community Group along with Claire Downes from Thurrock Thames Gateway Development Corporation.

A number of displays and information stands were set up in the Proof House, this included High House, Royal Opera House, Thurrock Development Corporation, Purfleet Heritage Centre and Fair Trade. There was free entry to Purfleet Heritage Centre and cannon fire throughout the day.

During the day those attending had the opportunity to take part in

a guided walk of Purfleet's history or view a slideshow in the Heritage Centre – both of these were run

by Jonathon Catton, Thurrock Museum.

A 'memories corner' was run by volunteers as part of the Development Corporations 'Purfleet in Words and Action' project aiming to record experiences of life in Purfleet.

Activities for children were provided by the Thurrock Play Network, RSPB and Healthy Living Centre.

A free minibus took those who were interested on a trip to the RSPB Visitor Centre to

experience the views and excellent café!

Overall, the event was a great success and helped people to recognise just how much Purfleet has to celebrate. There are plans to hold similar types of events on a regular basis in the future.



Guided walk by J Catton - Thurrock Museum

Discover Purfleet Heritage and Military Centre



The Centre was started in 1992 by a group of volunteers who wanted to preserve the No 5 Royal Gunpowder Magazine dating back to 1760. The Centre is located in Centurion Way, Purfleet.

Upon entering the building you will feel, sense and smell the atmosphere of the 18th Century. You can find out about the history of Purfleet, the building, storage of gunpowder, the Garrison who guarded this important military store and the rifle

range that used to be nearby and is now the RSPB nature reserve.

When you visit the Centre you will also take a magical trip through this country's historical past. You can take a look at varied displays from the 18th century costumes, the 'How we used to live' section to a World War Two air raid shelter. The history of communication, photography and everyday items is well catered for,

with displays of early radio, television equipment and cameras.

The military section has a wealth of unique memorabilia and covers the Army, Navy and Royal Air Force, civilians in wartime and the role of women.

Find out about the many famous people who have visited Purfleet through history. These include: Captain James Cook, Captain William Bligh, Bram Stoker, Queen Elizabeth II and Benjamin Franklin.

All of this, a tea bar, shop and much, much more can be found! There is definitely something for the whole family to enjoy.

Special events for 2007

Far East exhibition

June to end of July

Battle of Britain & Home Front exhibition

August to end September

Opening Times

April to October – Thursday, Sunday & Bank Holidays 10 a.m. to 4.30 p.m.

November to March – Thursday & Sunday, 10 a.m. to 3 p.m.

Also available for school or group bookings during weekdays

For more information
Phone 01708 523409 or
07985 606549

Memories of Life in Purfleet

Pam Wilkinson My father was born in 1903, his name was Alfred James Davies and he lived in Islington. He would tell me that people used to go to Purfleet for holidays. He had a motorbike and would come to Purfleet on it. Other people from London went to Purfleet in pony and traps and for them Purfleet was a holiday destination.

Gary Lilley – Balls on the Beach About 30 years ago there was a spill in the river of lots of footballs. West Thurrock, Purfleet and Grays kids followed the balls down the river waiting for them to wash ashore. Most were washing up on Purfleet marshes. When we couldn't reach the balls with planks of wood and sticks we had to find another way. We tied string onto younger children, threw them into the river to reach the balls and then pulled them back in! We ended up with hundreds of balls which we could hardly carry and some very dirty younger kids. When we got home the younger ones were so covered in dried mud that they looked like statues and they were moaning and whining! We then had to face some serious telling offs!

Update from the Community Development Officer

I started my post in December 2006 and will be continuing to support community activities until the end of May 2007. Thurrock Thames Gateway Development Corporation received £40,000 from 'Investors in Communities' through Thames Gateway South Essex Partnership and East of England Development Agency to fund the project.

As part of this, I have been involved in a variety of activities:

- Pulling together this community newsletter
- Contacting local groups to find out the issues or concerns of residents
- Identifying projects, groups and activities which need funding or support

- Supporting the High House Community Group to encourage the community to get involved
- Developing 'Purfleet in Words & Action' which gave local people the chance to find out about Purfleet's history and gain acting and playwriting skills
- Getting involved in regeneration plans and helping to ensure local people have their say
- Holding weekly drop-in sessions
- Supporting 'Walking the Way to Health' as a walk leader
- Organising an information event and multi-cultural lunch for older people
- Contacting businesses to identify their key issues and where they need support

- Working with the Riverlane Centre to improve safety and lighting
- Supporting the Community Forum & providing information updates
- Keeping local people up to date by distributing regular information
- Finding out 'what's on when' in Purfleet so local residents know what is available
- Generally working to support groups, sharing information and encouraging people to take part

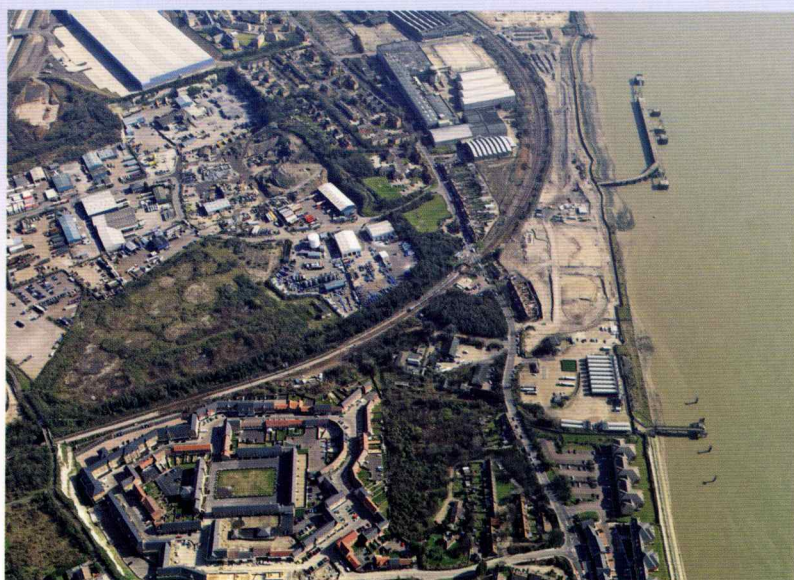
For more information about any of this please phone 01708 895400.

Claire Downes, Community Development Officer

Some statistics about Purfleet

Thurrock Development Corporation has commissioned research to gather key information and statistics about Purfleet. 'Local Futures' produced an 'Area Profile' examining economic, social and environmental factors. The Profile compares Purfleet to other Thurrock wards and nationally. It draws attention to strengths, weaknesses and assets, highlights key issues and challenges and helps monitor future performance. The profile will help shape future plans for Purfleet.

For more information, or a copy of the profile, contact Lois Bowser on 01708 895400.



Thurrock Thames Gateway Development Corporation and Purfleet

The Thurrock Thames Gateway Development Corporation was set up to promote the housing and economic growth of Thurrock as part of the Government's Thames Gateway Growth Area. It has been working with the residents and stakeholders of Purfleet for over two years.

Purfleet has an important role to play in the Corporation's plans for the regeneration of Thurrock with its river front, military and industrial heritage and its capacity to accommodate new jobs and family homes.

Local people have told the Corporation that Purfleet's environment has been degraded by industry and that associated HGV traffic causes congestion on the busy London Road. Residents have also said that it is difficult to access public services and to enjoy the river and other open space.

As part of its emerging programme, the Corporation is keen to work with the residents of Purfleet in order to bring about lasting improvements in the quality of life for local people. It will do this by

facilitating improvements to the range and quality of local services, creating the conditions for economic growth and through the provision of new family homes.

In consultation with local people and other stakeholders the Corporation has prepared and adopted a Master Plan for Purfleet. The Plan promotes a new centre for Purfleet that will be constructed in a location to be determined but near to the railway station. The Corporation also has plans to construct a new link road through Botany Quarry, connecting London Road with the Purfleet Bypass and reducing congestion at the level crossing. The new centre will provide a range of services including a new primary school, shops and other commercial space and will have safe pedestrian and cycle routes connecting it with other parts of Purfleet. Development options are being prepared on which the Corporation will be consulting residents and other stakeholders at the end of May.

The Corporation has already begun its programme of regeneration. It has also funded the construction of the new roundabout at Stonehouse Corner, substantially improving the flow of traffic in this area. The Corporation has also provided funding to the RSPB for the construction of the new centre for environmental education at Purfleet and for improving access to the marshes. Work is also underway at High House to establish the site as a production campus for the arts and creative industries. The development of the High House site will include provision for community space within the listed buildings and will create opportunities for local people to develop skills in this growing sector.

The Corporation is keen to ensure that the people of Purfleet have a strong role in developing the future of their community.

For more information, please contact Lois Bowser, Assistant Director of Delivery at the Development Corporation on 01708 895400.

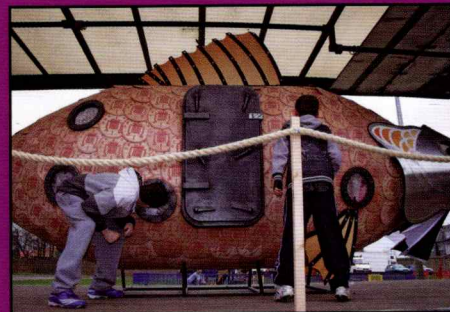
Did you see a giant fish travelling through Purfleet?

Since the autumn artist Jane Wilbraham has been working in Purfleet as part of the Commissions East Art U Need project. Jane researched Purfleet's relationship to food, transport, the river and its proximity to London.



An event for young people was also held on **5th April** at the RSPB Reserve. 'From Pond to Plate' enabled young people from Purfleet to have a go at pond dipping and explore their artistic skills by producing a painted plate piece of artwork.

A large sculpture called 'The Purfleet One Float Carnival' or 'The Re-inauguration of the Ministerial Fish Dinner' was created, this giant fish toured Purfleet on 24th March. Cookbooks have been distributed and children at Purfleet Primary School made fish and fly masks as part of the project.



Take time to Care...

How many mornings have you looked in a mirror and wondered what was happening to your once-perfect skin? Everyone's skin deserves some TLC and we should make the time to do just that.

There are 5 things our skins needs daily for a good routine:

1. **Cleanse** – to remove makeup and impurities
2. **Exfoliate** – to remove dead surface cells that dull the skin
3. **Refresh** – to tone skin and refine pores
4. **Moisturise** – to hydrate for soft smooth skin

5. **Protect** the skin from sun and environmental damage

Phew, 5 different bottles daily? Not necessarily, in Mary Kay we have the Timewise range. You need 3 bottles instead of 5.

Check your shelf NOW and tick off what you have and what you lack. You might want to improve your skin care routine so your skin remains in good condition.

I am here, as a trained beauty consultant to offer free advice on your skin care needs so don't hesitate to call or mail me. Till next time, enjoy your skin...

Doyin Olorunfemi • 07919 343 484
doyinfemi@marykay.com

COMPETITION



Microdermabrasion is a revolutionary system designed to fight fine lines, refine pores and smooth skin to make you look younger and more radiant.

WIN a Mary Kay Microdermabrasion set worth £48 by answering the following:

Name one thing Mary Kay fights against'
E-mail answers to doyinfemi@marykay.com with subject line 'Microdermabrasion reader offer'.

First 10 correct answers will win.

New Covenant Church Purfleet (NCC)

We are a growing family church in Purfleet for over 3 years and one of the many NCC branches worldwide. Part of our local vision is to empower and positively encourage members of the community.

There are a range of services and activities available – see the 'what's on' section of this newsletter. The Church meets at Purfleet Primary School, New Tank Hill Road, Purfleet, Essex RM19 1TA

We have good links with the local youths and community, through youth meetings, youth outings, the Community Forum and

well known yearly summer sports and party events.

We have an 8 seater mini bus for outreach, evangelism and community work.

Future plans

- To spread the Gospel within and around the community
- To raise our profile and build more links within the community
- To obtain funding to push forward our innovative projects

- To restore family values through education/skills awareness and empowerment
- To get involved in initiatives to reduce crime and increase safety

A key focus for the church is to create more youth and community programmes and to make a difference for young people. Sunday Church Service 10.30 – 12.30

All are welcome to attend our church service and programmes

Call me for a chat if you would like to find out more: Pastor Fred 07956 905 295

Volunteer at the RSPB Nature Reserve in Purfleet



Volunteering is a rewarding and increasingly popular way for people to show support for their favourite charities. RSPB volunteers provide invaluable,

practical assistance, and in return can learn skills, gain experience to help with their careers and meet new people.

Pete Stammers – "Volunteering is fun and worthwhile – join in!"

Pete has been a RSPB volunteer in Purfleet since the early days when there were high levels of ground contamination, no facilities and the small team was working from a port-a-cabin in Ferry Lane. Married with two children and two grandchildren, Pete worked until early 2005 for BP at Coryton. Pete saw volunteering with RSPB as an opportunity to do something valuable when he retired. Volunteering has enabled him to socialise,

be involved with key projects and become a valued member of the team. "It was hit and miss in the early days, but we have all had a laugh and enjoyed ourselves doing something worthwhile." **This sums up what volunteering is about.** Pete is one of a growing number of volunteers and volunteering will keep him busy during his retirement.

Find out more

Contact Sue Housden, RSPB Volunteer Co-ordinator. Tel: 01708 899840 or e-mail: sue.housden@rspb.org.uk

An interesting day for older people



Around 25 older people dropped in to the Hall at the Mulberry Drive Complex in Purfleet to take part in a free information event for the over 50's. Between 10 a.m. and 3 p.m. on Wednesday 14th March those who came along could access information and advice on a whole range of topics.

The day was an attempt to tackle the idea that older people are sometimes 'forgotten' in Purfleet as many activities and services are targeted at children or families.

A range of organisations were on hand throughout the day to ensure that as much information and advice as possible was available. These included:

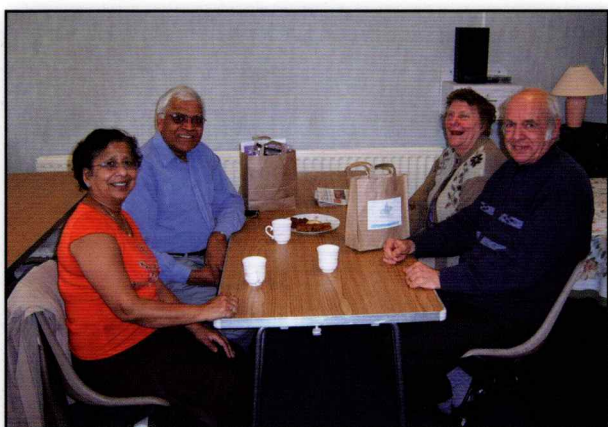
- Safer Thurrock Partnership - information and advice about home, personal and vehicle safety and distribution of safety equipment such as safe cans, personal alarms and purse chains
- Healthy, Wealthy & Wise - Thurrock Council Benefits, Healthy Living Centre, CVS and TOFFS
- Essex Fire Service
- Anti-Social Behaviour Unit
- Thurrock Development Corporation Community Development
- Tenant Participation
- RSPB - ideas for bird feeding in the garden
- Thurrock Ethnic Multi-Cultural Support (TEMS)
- Besure Care & Mobility - examples of equipment for older people
- Second Generation - re-use furniture project
- Essex Police

The Safer Thurrock Partnership gave away goody bags containing information, stickers and safety equipment such as safe cans, personal alarms and purse chains.

TEMS provided a very tasty multi-cultural lunch thanks to funding from Thurrock Council Tenant Participation. This was enjoyed very much by the Mulberry Drive residents who have asked that it takes place on a regular basis!

People's memories of life in Purfleet were recorded by the Development Corporations Community Development Worker as part of the 'Purfleet in Words and Action' project. This included one resident who has lived in Purfleet since she was 11 and who is now 87 years old!

Everyone involved felt that the day was a great success and the older people who attended commented that it was nice to have such easy access to information and advice.



Thurrock Development Corporation's Community Fund


The Thurrock Thames Gateway Development Corporation continues to support communities across Thurrock through an exciting funding opportunity for community and voluntary organisations.

The Thurrock Development Corporation Community Fund is intended to encourage and promote activities in the voluntary and community sectors including non-profit making clubs, groups and organisations. The Community Fund will support the delivery of projects that really matter to local communities.

Local groups are invited to submit applications for capital and revenue grants by the 28th of each month. Projects can range from as little as £100 up to £20,000. The Community Fund has already made grants totalling £120,000 to sports teams, Scouts and Guides, community building projects and community events. Another £240,000 will be available through to the end of March 2008.

For further information or to request an application pack contact Jean Angus, Community Development and Funding Officer on 01708 895400 or email communityfund@thurrocktdgc.org.uk





WE CAN HELP

Thurrock Citizens Advice Bureau

**For a free confidential advice service
Visit one of our Outreach sessions at**

Tuesdays 10-1pm	South Ockendon Forum Derwent Parade	Appointments necessary
Tuesday 2-5pm	Aveley Medical Centre High St Aveley	Appointments necessary
Friday 10-1pm	Purfleet Medical Centre Tank Hill Rd	Appointments necessary

or

Drop in between 10am-4pm Monday-Friday at

**Voluntary and Community Resource Centre
High Street
Grays**

Specialist help on DEBT, HOUSING and WELFARE BENEFITS

www.adviceguide.org.uk

0870 126 4034

CAB is a registered charity

What is happening at High House?

Recently you may have seen publicity about High House and the land around it. Exciting proposals are being discussed. It is planned for the National Skills Academy to locate here to assist in the training of people in technical skills related to theatre and live music. There will be workshops for small enterprises which support these kinds of industries. All of these would be based in newly built buildings and workshops.

It is also planned that the Royal Opera House (ROH) Production Facility will relocate to the High House site. This will involve all the 'back room' work such as making sets and scenery. The proposals are moving forward with various organisations working together to make things happen. This will be a huge undertaking with work on the site scheduled to begin by the end of 2007 with everything finished around 2010.

The High House listed buildings and the Dovecote, a scheduled ancient monument, will be refurbished and converted for viable business and community uses. The open spaces such as the walled garden will also be restored. Space within the listed buildings could include a café, restaurant, exhibition space and meeting rooms.

What has happened already?

- A plan was drawn up to make sure all the activities can fit onto the site and buildings
- Architects have carried out a detailed study to help decide what activities can go where
- Planning applications have been prepared and submitted
- A business plan for the National Skills Academy is being drawn up
- Agreement on land assembly is under discussion

What will happen next?

- The community will have the chance to comment on and influence the plans for the site including the uses for the buildings and open spaces.
- Work will begin to safeguard and secure the buildings while a bid for funding from the Heritage Lottery Fund is developed.
- The Royal Opera House will be carrying out a community engagement and education programme throughout Thurrock
- The Master Plan for the whole site will be completed
- Individual planning applications for buildings will be submitted
- Groundwork on the site should begin from 2007 through 2008

For more information please contact Matthew Essex, Delivery Manager, at Thurrock Thames Gateway Development Corporation on 01708 895400.

High House Community Group



The High House Community Group is made up of local residents and organisations. The group aims to work with the community to:

- Influence future activities at the High House site
- Protect the sites heritage
- Promote Purfleet's rural past to visitors
- Promote access to the site for the visiting public

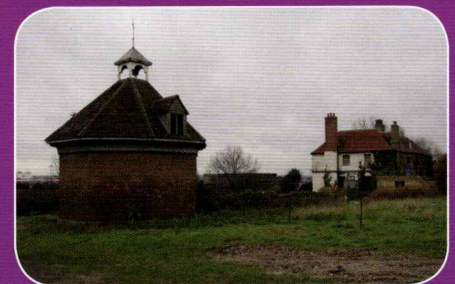
The group has been working hard for over three years to preserve and restore the High House buildings and grounds. Funding was received from Heritage Lottery Fund to consult the community and help draw up plans for the future. The aim was to have a 'Community Farm', however, due to a number of issues this was never able to move forward.

The group is now being asked to become involved in the new plans for the site. It aims to keep local people updated about what is happening and to ensure the views of local people are taken on board. So far the group has achieved this by organising the 'Heritage in Purfleet' open day on 11th February 2007 and working on a bid for funding to engage with young people about High House.

The group held its Annual General Meeting in February 2007, this renewed

enthusiasm and the newly elected committee is keen to be as active as possible. The group is always open to new members and there are a number of ways you can get involved, this could be by becoming a committee member, volunteering at events or being on a mailing list to receive regular information.

To find out more about the High House Community Group please contact Carol on 01375 389876.



Tony Dulieu – Living at High House I lived at High house around 35 years ago and the rent was £1 a week. I worked as lorry driver for Blue Circle. The rooms were too big - in the front room we had three, three piece suites and eight chairs and it still looked empty! We built a 20ft Indian type canoe in the bedroom! It was in much better state than it is now and Blue Circle owned and maintained it.

Dot Cootes – High House I used to live in Lower House cottages (which was a farm) on Ship Lane near the old A13. I lived there for about 27 years. I used to go to High House with my Dad. He worked on the farm and was head cowman. Me and my dad and the other farm workers used to wash vegetables in one of the sheds near the Dove Cote before taking them up to market in London. I was 9 or 10 and I'm 79 now so that was nearly 70 years ago!

High House was always busy and they had a lot of land. The land girls worked with my mum on the land near High House during WW2. Lakeside and the Dartford Tunnel are built on the land which used to be farms. The land girls would grow veg, do cropping, pick potatoes, rhubarb, beetroot, beans etc.

Supported by:



Thames Gateway
South Essex

INVESTING in
COMMUNITIES
Thames Gateway

